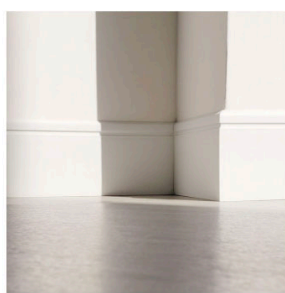


Sculptured Wall Base

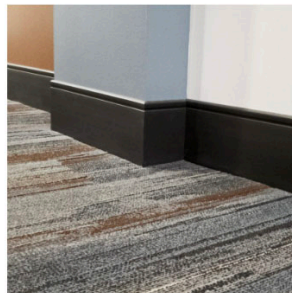
Coordinate your wallbase color and floor with five designer styles



Kobe



Brno



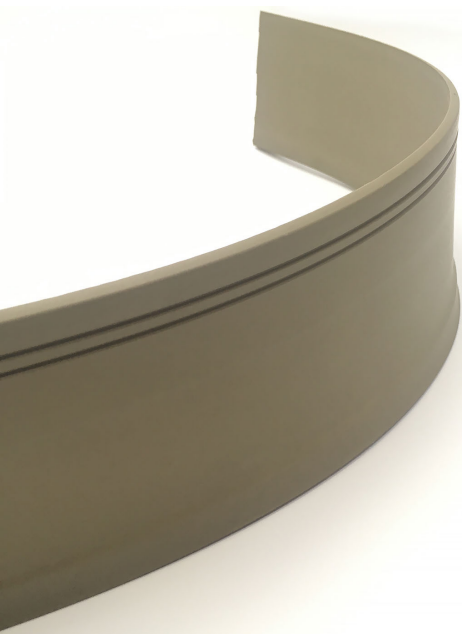
Alofi



Provo



León



The Collection

Rubber Wall Base Profiles



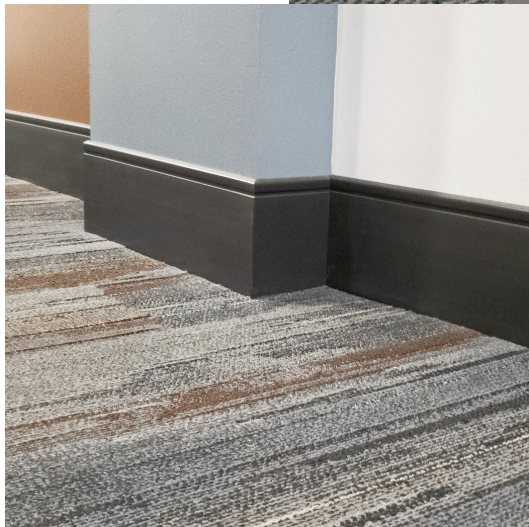
Kobe



Brno



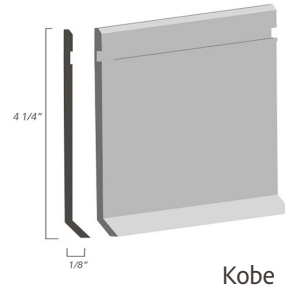
Provo



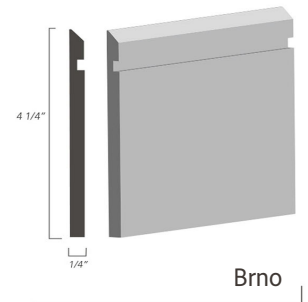
Alofi



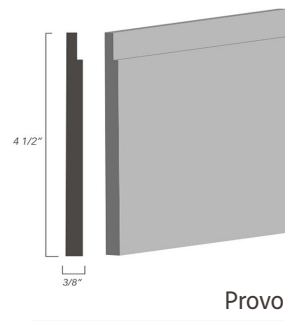
León



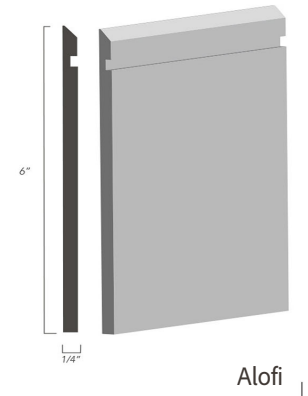
Kobe



Brno



Provo



Alofi

- Matte Finish
- Scuff and Scratch Resistant
- 10% Recycled Content
- Easy Cleaning
- VOC Free & Meets CHP Standards
- Rolls/Sticks Available with 2.5" | 4" | 6" Heights

Meets Standards for CHPS & CA DHS Standard Practice
Low-Emitting Materials



Color Line

Choose from **100+**
Colors



Running Line Colors

Neutrals									
A02	A06	A08	A09	A11	A12	A18	A22	A23	A07
D62	A32	A33	A40	A43	A46	A48	A50	A60	A61
A63	A67	A72	A90	A94	A95	A10	D22	A42	A47
D48	D49								

*Custom Colors

Reds									
D3	D4	D9*	D66	D77*	D78	D81			
Blues									
A07*	A20*	D14	D16	D19	D20	D20	D21	D41	D51
D54	D56	D57	D67	D71	D72				
Greens									
A50*	D15	D23	D24*	D25	D27	D27	D28	D39	D40
D58	D59	D68	D69	D69	D73	D80	A67*	A20*	A52*
Oranges									
D5	D10	D11	D42	D43	D64	D76			
Pastels									
A03*	A10*	A31*	A42	A47	D31	D33	D34	D35	D36
D44	D51	D53	D63	D74	D75				

* Minimum requirements
contact your sales representative

Spec Sheet

Rubber Cove Base Specs

DOWNLOAD SPECS PDF

- Hardness: 85±5
- Gauge .125" + 0.15" (1/8" base)
- Dimensional stability ASTM F1861-01 No more than -0.007 inch (0.6%)
- Squareness: 90° ± .5°
- Resistance to heat aging: no fading or softening
- Recycled content: 10% standard, up to 85% upon request
- DOP free
- DEHP free (on the STATE OF CALIFORNIA list of chemicals "known to cause cancer or reproductive toxicity")
- May contribute to LEED CI and NC credit MR 4.1, MR 4.2, MR 5.1, MR 5.2
- May contribute to LEED MR 5.1 NC/CI Regional Materials: 20% manufactured regionally
- May contribute to LEED MR 4.2 Recycled Content: 20% (post-consumer + ½ postindustrial)
- ASTM E84-91A: Flame Spread: 50 (class b)
Smoke Density: <450
- **Sizes:** 1/8" Base: 2½" (63.5mm), 4" (101.6mm) & 6" (152.4mm) (6" is only available in rolls).
- **Packed:**
 - 1/8" base 120' per carton (36.576m)
 - *Brno Packed 72' LF Per ctn*
 - Kobe 120 lf per roll (Kobe only available in rolls).
 - *Provo, Alofi 48 lf per ctn (72" lengths)*
- **Lengths:**
 - 1/8" base: 4' (1.22m) lengths or 120' (35.576m) continuous rolls
 - Kobe 120 lf rolls.
- **Formats:** 1/8" base: cove base (top set) & no toe (carpet base)
- **Styles:** Smooth
- Manufactured in Dalton, Georgia 30722
- Matching rubber tile & Stairtread system available
- 2 ½", 4" & 6" outside & outside corners available. Corners not available in WoodWerks™
- Meets ASTM F1861 standard for cove base, rubber Type TS. Type2
- All terms & specifications are subject to change without notice.



First Shriji Hospitality
FF&E Procurement

1461 W. Tallyho Court
Addison, IL 60101

Shyam Ahuja 1 (331) 575-0939

